

Driveline Vibration

Service Category Drivetrain

Section Drive Shaft/Propeller Shaft

Market USA

Toyota Supports
 ASE Certification 

Applicability

YEAR(S)	MODEL(S)	ADDITIONAL INFORMATION
2005 – 2014	Tacoma	Transmission(s): 5AT VDS(s): JU4GN, JU62N, KU4HN, KU72N, LU42N, LU4EN, MU4FN, MU52N, TU4GN, TU62N, UU42N, UU4EN

Introduction

Some 2005 – 2014 model year Tacoma vehicles equipped with automatic transmission may exhibit a vibration felt in the seat, floorboard, and steering wheel between 15 – 25 mph caused by a second order drivetrain vibration under acceleration. The following Repair Procedure may improve this condition.

Warranty Information

OP CODE	DESCRIPTION	TIME	OPF	T1	T2
EG8032	R & R Engine Mount	1.0	12371-0P030 12371-0P040 12371-0P041	9B	57
SU1301	Measure Joint Angle and R & R Leaf Springs	1.7	48210-04380 48210-04550 48210-04551 48210-04620 48210-04650 48210-04660 48210-35A20 48210-35A40 48210-35A80 48210-35A90 48220-04170 48220-04190 48220-04191 48220-04260 48220-04290 48220-04300 48220-35020 48220-35040 48220-35060 48220-35070	9B	57
ST1202	Install Steering Wheel Damper	0.6	45713-35050 45713-60030	9B	57

Driveline Vibration

Warranty Information (Continued)

APPLICABLE WARRANTY

- **EG8032 (R & R Engine Mount):** This repair is covered under the Toyota Powertrain Warranty. This warranty is in effect for 60 months or 60,000 miles, whichever occurs first, from the vehicle's in-service date.
- **SU1301 (R & R Leaf Springs) and ST1202 (Install Steering Wheel Damper):** This repair is covered under the Toyota Basic Warranty. This warranty is in effect for 36 months or 36,000 miles, whichever occurs first, from the vehicle's in-service date.
- **Warranty application is limited to occurrence of the specified condition described in this bulletin.**

Required Tools & Equipment

REQUIRED TOOLS	SUPPLIER	PART NUMBER
Mini-Mag Protractor (or equivalent)	Snap-on®	FFL74422450

Driveline Vibration

Parts Information

NOTE

BEFORE ordering parts, please refer to Repair Procedure and Part Number Selection Tables on pages 17 – 19 to order the correct parts for each vehicle.

MODEL YEAR	PART NUMBER		PART NAME	QTY
	PREVIOUS	NEW		
2005 – 2014	12371-0P030	12371-31240	RR Engine Mount Insulator (2WD V6)	1
	12371-0P040 12371-0P041	12371-31250	RR Engine Mount Insulator (4WD V6)	1
	48210-04380 48210-04550 48210-04551 48210-04620 48210-04650 48210-04660 48210-35A20 48210-35A40 48210-35A80 48210-35A90	48210-04580 48210-04590 48210-04650 48210-04660 48210-04670 48210-04680	RR RH Spring Assy	1
	48220-04170 48220-04190 48220-04191 48220-04260 48220-04290 48220-04300 48220-35020 48220-35040 48220-35060 48220-35070	48220-04220 48220-04230 48220-04290 48220-04300 48220-04310 48220-04320	RR LH Spring Assy	1
	2005 – 2011	45713-60030	Steering Wheel Damper	1
	2012 – 2014	45713-35050		1
2005 – 2014	90080-15079	Screw, w/Washer (for Steering Wheel Damper)	2	
2005 – 2014	90117-A0001	90117-A0005	U-Bolt	4
	90178-A0050		Flange Nut	8
	94622-51400		Plain Washer	8
	48341-04070 48341-04080	48341-04090	RR Spring Bumper	2

Driveline Vibration

Parts Information (Continued)

NOTE

- If the vehicle was built October 2013 or earlier, replace the RR Spring Bumper, U-bolts, Flange Nuts, and washers with new parts listed in the table above.
- If the vehicle was built November 2013 or later, no additional parts need to be replaced.

Repair Procedure

1. Some level of driveline vibration is normal in all vehicles. However, if vehicle exhibits vibration under the following conditions, proceed to step 2:
 - 10% throttle input or slow run up.
 - 30% or greater throttle input.

HINT

On 4WD trucks the following method can be used to confirm if this bulletin applies to the vehicle:

- Remove the rear driveshaft.
- Shift into 4WD HI.
- Test drive the vehicle.
- If the vibration is gone, then this bulletin applies. If the vibration is still present, this bulletin does NOT apply.

NOTE

If the vehicle has an aftermarket suspension/body lift or leveling kit installed, this bulletin does NOT apply.

2. Verify in vehicle history if the vehicle has had Service Bulletin No. T-SB-0249-12 performed.

Has the vehicle had T-SB-0249-12 performed?

- **YES** —
 - 2005 – 2011 MY: Go to step 4.
 - 2012 – 2014 MY: Go to step 5.
- **NO** — Go to step 3.

Driveline Vibration

Repair Procedure (Continued)

3. Replace the Rear Engine Insulator (Rear Transmission Mount).

Refer to the Technical Information System (TIS), applicable model and model year Repair Manual:

- 2005 Tacoma:
Drivetrain – Automatic Transmission/Transaxle – “Automatic Transmission Assy ([A750E](#)): Replacement”
- 2006 – 2014 Tacoma:
Drivetrain – Automatic Transmission/Transaxle – “A750E / A750F Automatic Transmission: Automatic Transmission Assembly: Removal / Installation”
 - 2006 Tacoma (A750E): [Removal](#) / [Installation](#)
 - 2007 Tacoma (A750E): [Removal](#) / [Installation](#)
 - 2008 Tacoma (A750E): [Removal](#) / [Installation](#)
 - 2009 Tacoma (A750E): [Removal](#) / [Installation](#)
 - 2010 Tacoma (A750E): [Removal](#) / [Installation](#)
 - 2011 Tacoma (A750E): [Removal](#) / [Installation](#)
 - 2011 Tacoma (A750F): [Removal](#) / [Installation](#)
 - 2012 Tacoma (A750E): [Removal](#) / [Installation](#)
 - 2012 Tacoma (A750F): [Removal](#) / [Installation](#)
 - 2013 Tacoma (A750E): [Removal](#) / [Installation](#)
 - 2013 Tacoma (A750F): [Removal](#) / [Installation](#)
 - 2014 Tacoma (A750E): [Removal](#) / [Installation](#)
 - 2014 Tacoma (A750F): [Removal](#) / [Installation](#)

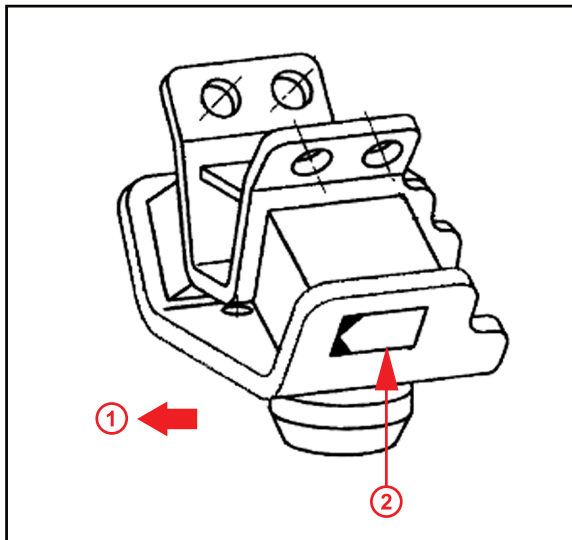
Driveline Vibration

Repair Procedure (Continued)

HINT

Refer to Figures 1 and 2 to confirm the proper part identification by examining the label on the part, and for the proper positioning of the new engine mount in ATM equipped trucks.

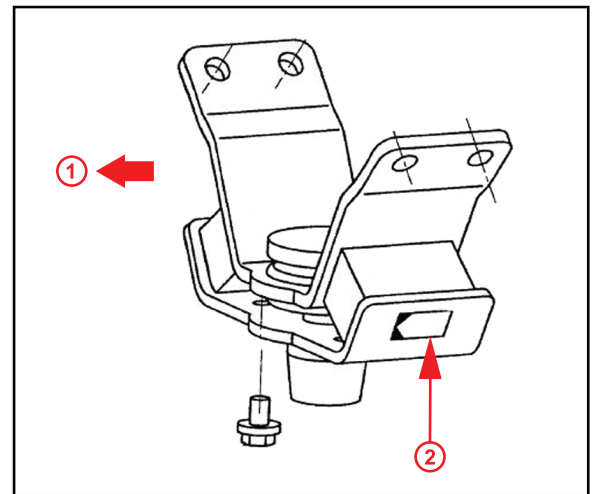
Figure 1. 2WD Rear Engine Insulator



1	Front of Vehicle
2	Label

ENGINE	I.D. ON LABEL	LABEL COLOR
1GR	VA	Green

Figure 2. 4WD Rear Engine Insulator



1	Front of Vehicle
2	Label

ENGINE	I.D. ON LABEL	LABEL COLOR
1GR	VA	Green

Driveline Vibration

Repair Procedure (Continued)

4. Install the Steering Wheel Damper.
 - A. Remove the steering wheel pad.

NOTICE

Wait at **LEAST 90 seconds** after the ignition switch is turned to the **LOCK** position and the negative (-) terminal cable is disconnected from the battery before performing this procedure.

Refer to TIS, applicable model and model year Repair Manual:

- 2005 Tacoma:
Vehicle Interior – Supplemental Restraint Systems – "Horn Button Assy: [Replacement](#)"
- 2006 – 2014 Tacoma:
Vehicle Interior – Supplemental Restraint Systems – "Supplemental Restraint System: Steering Pad: Removal"
 - 2006 Tacoma: [Removal](#)
 - 2007 Tacoma: [Removal](#)
 - 2008 Tacoma: [Removal](#)
 - 2009 Tacoma: [Removal](#)
 - 2010 Tacoma: [Removal](#)
 - 2011 Tacoma: Removal ([06/2010 – 12/2010](#)) / ([12/2010 –](#))
 - 2012 Tacoma: [Removal](#)
 - 2013 Tacoma: [Removal](#)
 - 2014 Tacoma: [Removal](#)

Driveline Vibration

Repair Procedure (Continued)

- B. Remove the steering wheel switch wire harness retainer bracket (only for vehicles with steering wheel mounted switches).

Is the steering wheel switch wire harness retainer bracket present? (See Figure 4.)

- **YES** — Proceed with removal of the bracket.
- **NO** — Proceed to step C.

Figure 3. 2005 – 2011 MY Steering Wheel

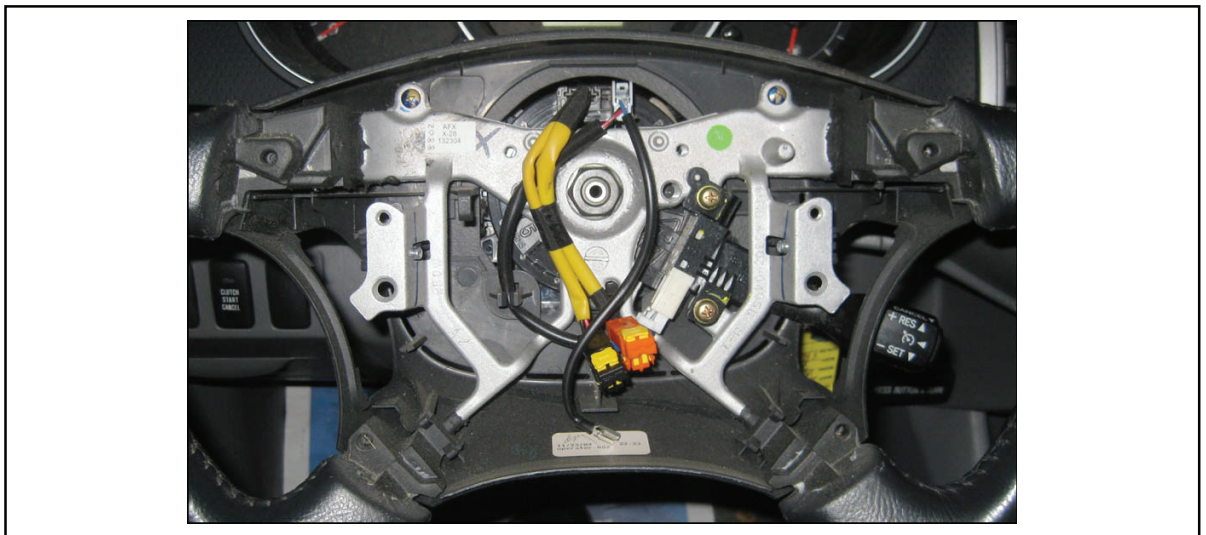
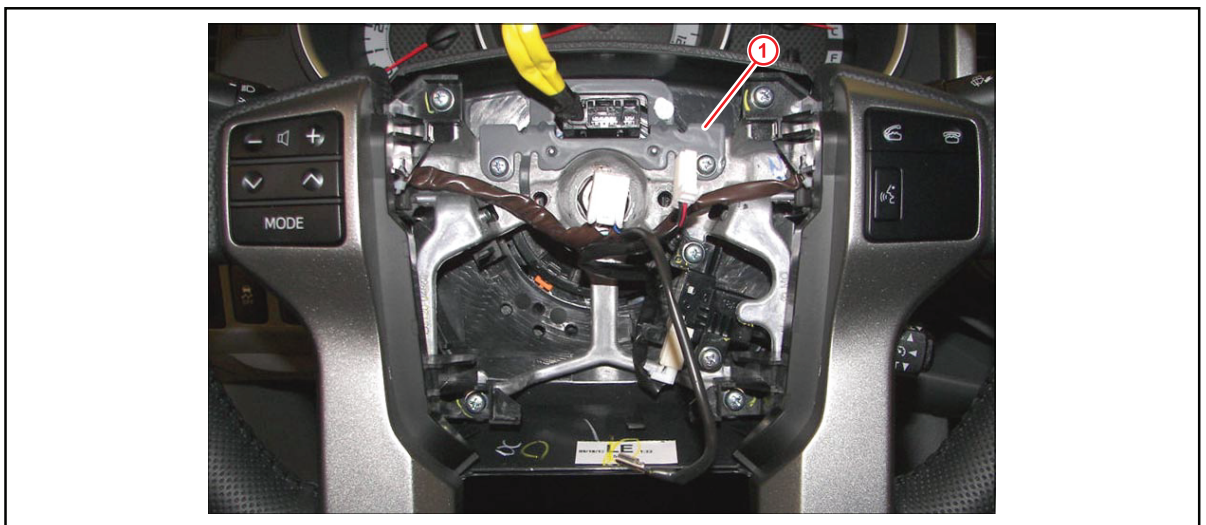


Figure 4. 2012 – 2014 MY Steering Wheel



1	Steering Wheel Switch Wire Harness Retainer Bracket
----------	--

Driveline Vibration

Repair Procedure (Continued)

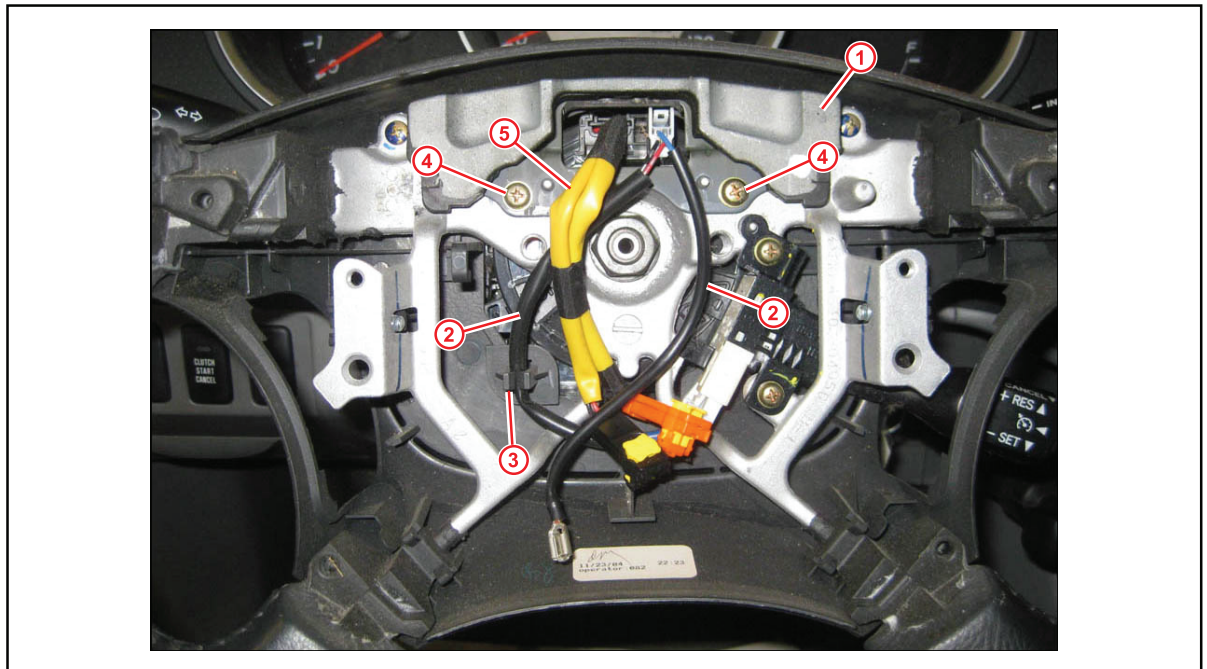
- C. Install the Steering Wheel Damper with 2 new screws in the location shown in Figures 5 and 6.

CAUTION

Use care when handling the driver side airbag wire harness during steering wheel damper installation.

Torque: 2.35 N*m (24 kgf*cm, 20.8 in*lbf)

Figure 5. 2005 – 2011 MY Steering Wheel



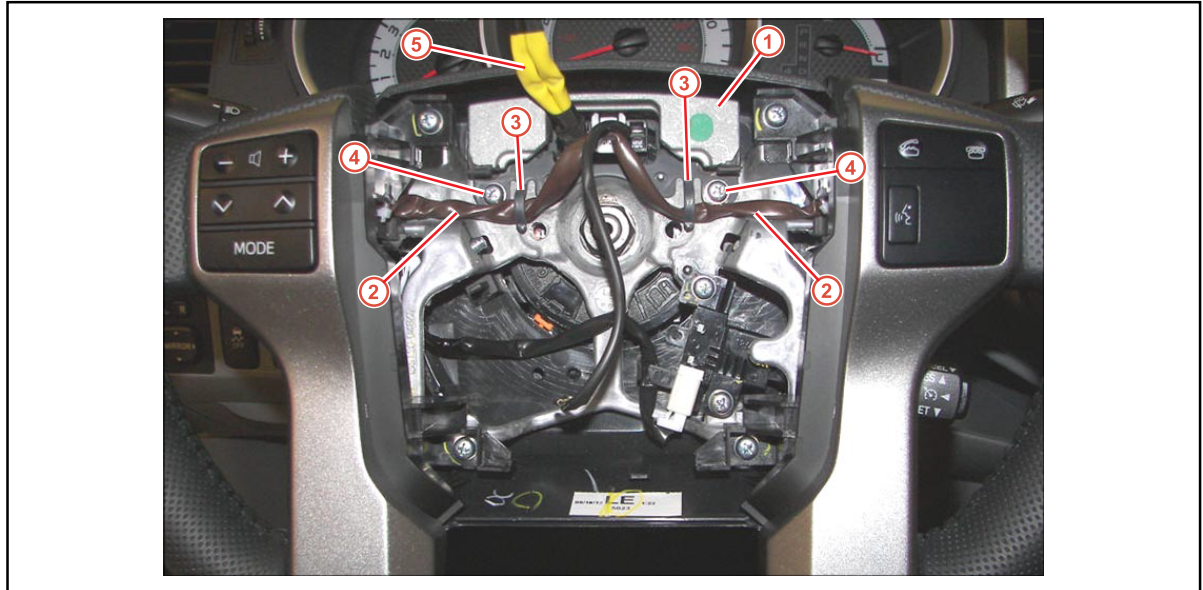
1	Damper
2	Cruise Control Wire Harness
3	Wire Retainer Hooks

4	Screw
5	Driver Side Airbag Wire Harness

Driveline Vibration

Repair Procedure (Continued)

Figure 6. 2012 – 2014 MY Steering Wheel



1	Damper
2	Steering Wheel Switch Wire Harness
3	Wire Retainer Hooks

4	Screw
5	Driver Side Airbag Wire Harness

NOTE

Secure the steering wheel switch wires to the steering wheel damper bracket hooks as seen in Figures 5 and 6.